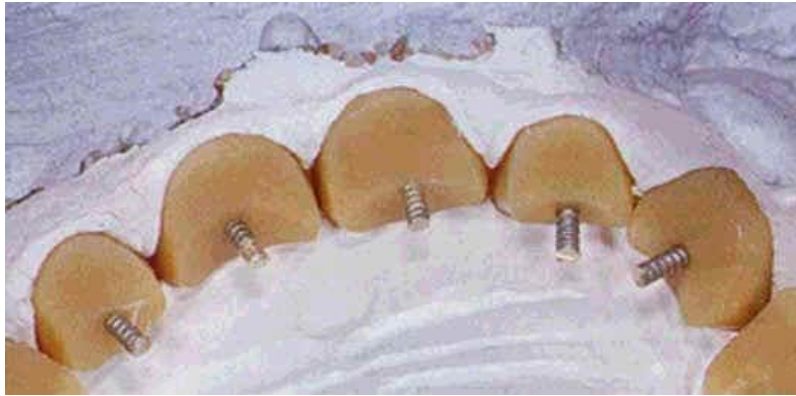




[www.preat.com](http://www.preat.com)  
800-232-7732



# Perma Ret



## Perma Ret Kit

Precious threaded metal wire for incorporation into predrilled openings in denture teeth, providing retention in acrylic resin or composite.

- 1 Wire Holder
- 3 Twist drills
- 13 pieces of 80mm long rhodium coated wire



## Perma Ret Wire Refill

Rhodium coated wire (1.05mm diameter) to provide retention in denture material.

Refill: 13 lengths of 80mm wire



## Perma Ret Twist Drills

Twist drill for handpiece. Used to prepare a threaded recess in denture teeth for the wire.

Package of 3 twist drills

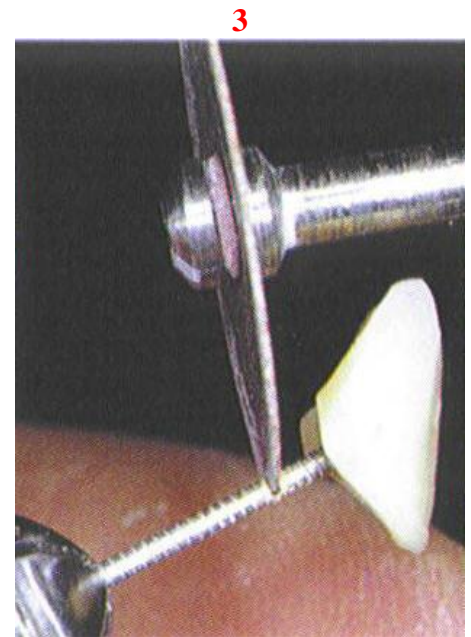
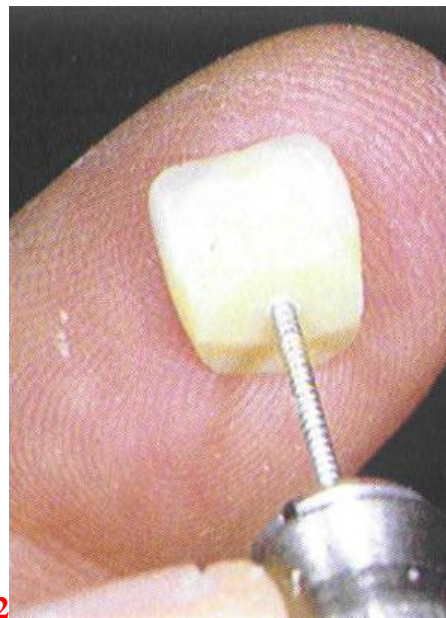
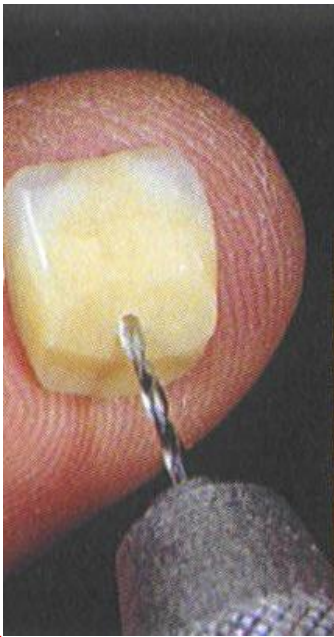
## Perma Ret Wire Holder

Used to thread in the wire after the threaded recess has been created with the twist drills. 2 heads on the Wire Holder.

Packaged individually.



## Instructions



Determine the exact position for the Perma Ret Wire. Using the calibrated Perma Ret Twist Drill in a handpiece, make a small (3mm deep) hole (**FIG 1**) in the tooth. Cut and place a sufficient length of wire into the Perma Ret Wire Holder. Thread the precious metal wire into the threaded hole in the tooth (**FIG 2**). Cut the threaded wire to an approximate length of 4mm (**FIG 3**), flattened or bent to the desired position. Bending the wire into a "loop" offers maximum retention for acrylic resin.



Process denture base material.