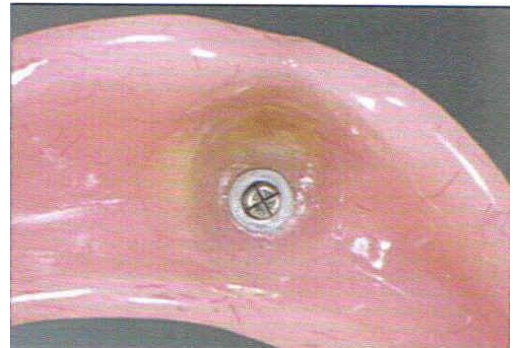




[www.preat.com](http://www.preat.com)  
800-232-7732



## Overdenture System



The attachment female in the post coping and the adjustable spring pin in the removable prosthesis.

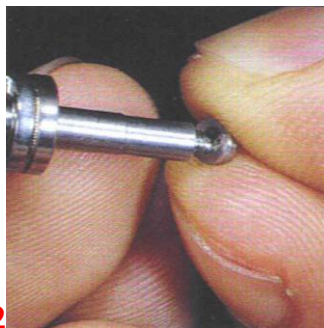
Advantages:

- May require less vertical space
- Provides a more stable prosthesis
- Easier to service

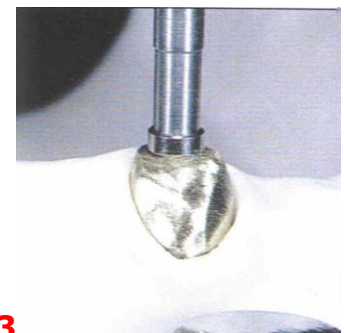
## Fabrication of the post coping: Soldering Technique



1

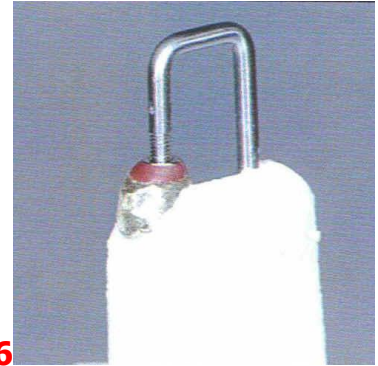
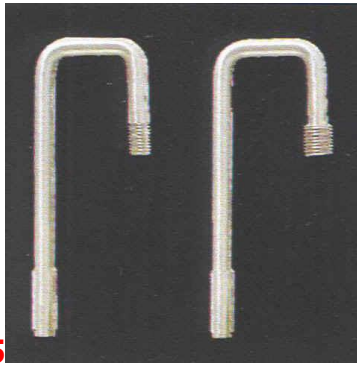
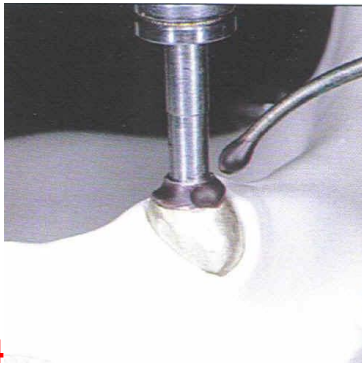


2



3

The coping after casting and finishing (**FIG 1**). Use the (RE) **P4 mandrel** for positioning the base ring. Thread the **Pallax base ring** onto the mandrel (**FIG 2**). Reduce the cast coping to 0.3mm. Position the base ring in direct contact with the post coping. The base ring will be surrounded with solder (**FIG 3**).



Parallel the base rings and secure with sticky wax (**FIG 4**). The RE H4 and **H4 soldering accessories** for base rings (**FIG 5**). Apply **liquid colloidal graphite**, or anti flux, to the threaded areas to assure easy removal after soldering. Maintain horizontal position during investing to assure a proper flow of solder (**FIG 6**).



Boil out after 45 minutes setting time (**FIG 7**). **Ceka Sol** is recommended for soldering (**FIG 8**). Do not use any anti flux, as Ceka Sol contains its own flux. Evenly apply the solder. Slightly heat the soldering accessory for easier removal (**FIG 9**).



In cases of limited space, the post coping may be waxed up in a concave form (**FIG 10**). The rounded shape of the coping allows for easy patient cleaning and hygienic maintenance (**FIG 11**).

[The next step: retaining the female in the prosthesis](#)