

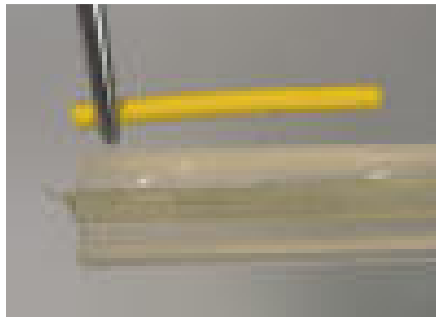


## eFiber Direct Surface Retained Bridge

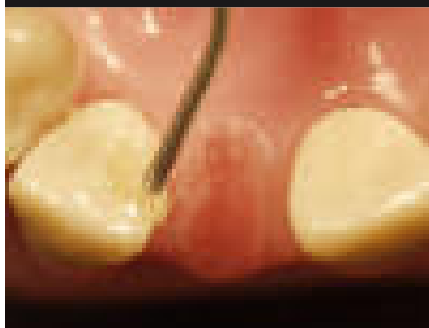
[www.preat.com](http://www.preat.com)  
800-232-7732



1.



2.



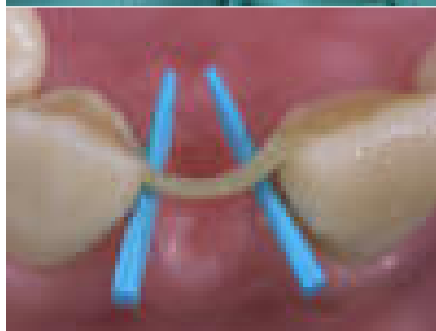
3.



4.



5.



6.

### Direct surface retained bridge

#### Step-by-step:

1. Measure the right length for the fiber with dental floss. Cut a suitable length piece of eFiber, including the packing silicone. Account for a little more for making a curved frame in the pontic.
2. After etching and bonding apply a thin layer of composite into the cavities, undercuts, etc. NOTE! Don't light cure at this point.
3. Press the fibers against the intended area using the soft transparent silicone as an aid to achieve close adaptation. **Light cure through the silicone** for minimum 5-10 seconds on each tooth. Remove the silicone from the fiber frame.
4. Place the wooden wedges to the proximal space to prevent covering the cleaning spaces with composites. The pontic can be built in three ways:

- A. Make a groove to the patient's own tooth and cement it. B. Make a groove to a plastic bella crown, fill it with a desired material and place it over the fiber frame.
- C. Veneer the pontic with composite or flow composite. Build from flow composite or composite resin by layers.

T0068.REV.00