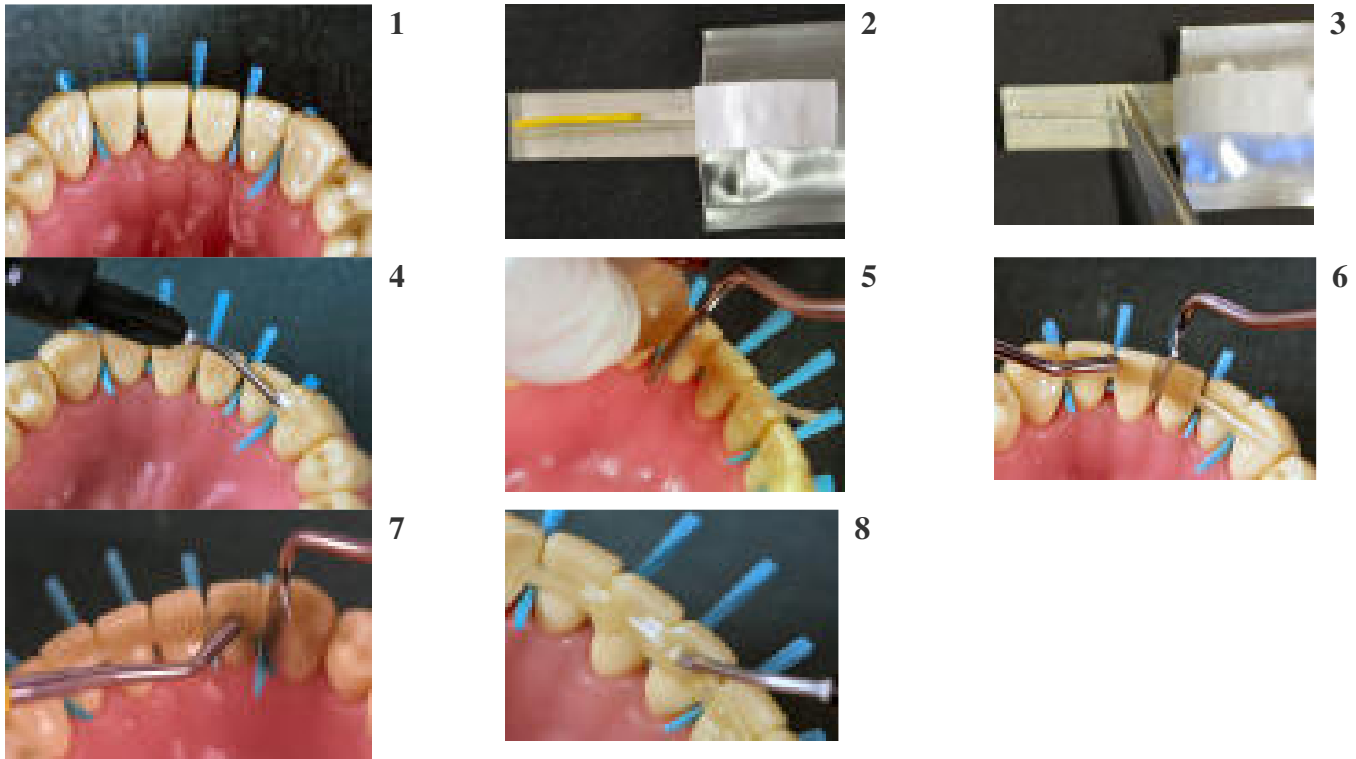


## eFiber Lingual Splinting



### Lingual splinting

#### Instructions

1. Clean the teeth surfaces with pumice. Place wooden wedges in the proximal areas to maintain good cleaning spaces.
2. Measure the right length for the eFiber with dental floss or wax rope as illustrated in the example.
3. With scissors, cut the right length of fiber from the package. Reseal the package to prevent the rest of the bundle from curing.
4. Etch the teeth surfaces, rinse with water, air dry, apply the bonding agent and light cure. Then apply a thin layer of flow composite on the teeth. Note! **Do not light cure at this point.**
5. Place the end of the eFiber bundle over the flow composite, pressing either with a hand instrument or with a silicone matrix. Light cure for 5 seconds, but limit the light from rest of the bundle using a wide instrument e.g. wax spatula or Stepper.
- 6- Continue without the silicone instrument by pressing the fiber bundle, with a hand instrument (eg. Stepper), on one tooth at a time covering the rest of the bundle from the curing light. Light cure for 5 seconds on each tooth. (photos 6,7)
8. After the whole splint has been positioned, cover it with composite and light cure for 40 seconds on each tooth.