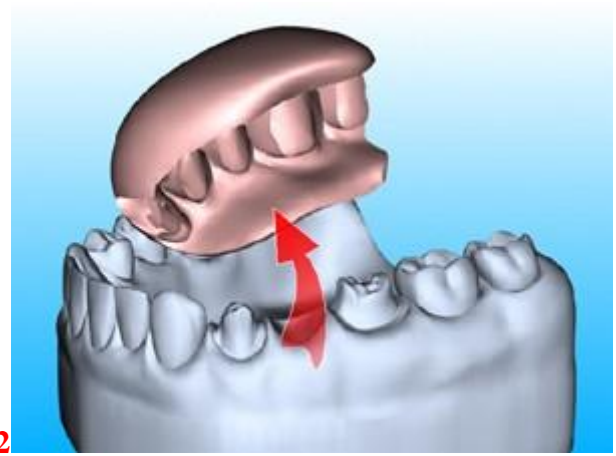
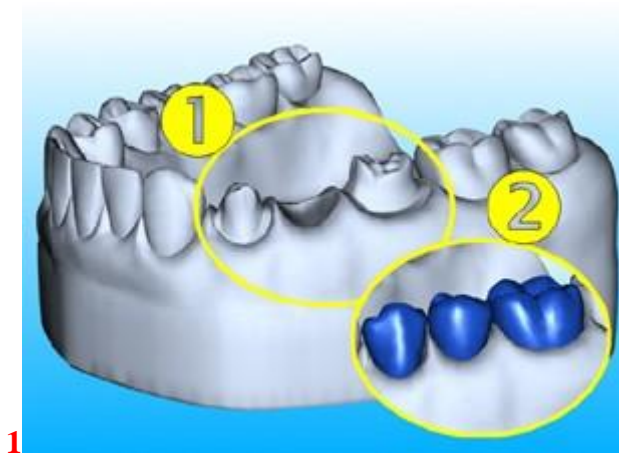


# Fiber & Mesh for Provisionals

Perma Mesh is used to reinforce crowns, while Perma Fiber is recommended for bridges and connectors. Fill the mold with resin and place the Fiber, which has been saturated with a mixture of powder and monomer liquid, on top. Use a second layer of reinforcement that fits between abutment teeth if necessary. Position the sufficiently large pieces of saturated mesh in the abutment spaces. Close the mold, press and cure in a pressure pot. At this point the mesh pieces will surround the abutments and the Fiber will stay close to the occlusal surfaces. Refine the processed bridge and fit into place.

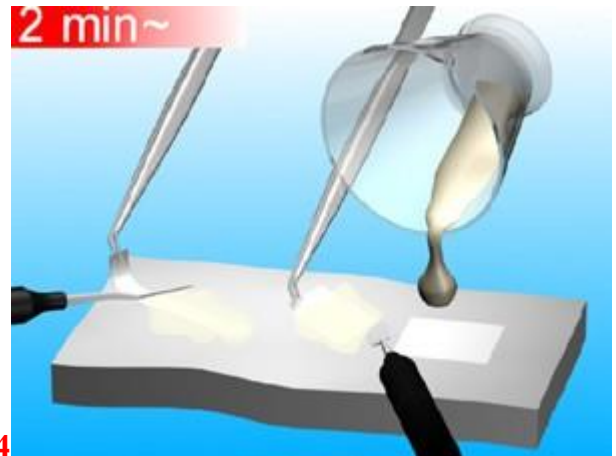
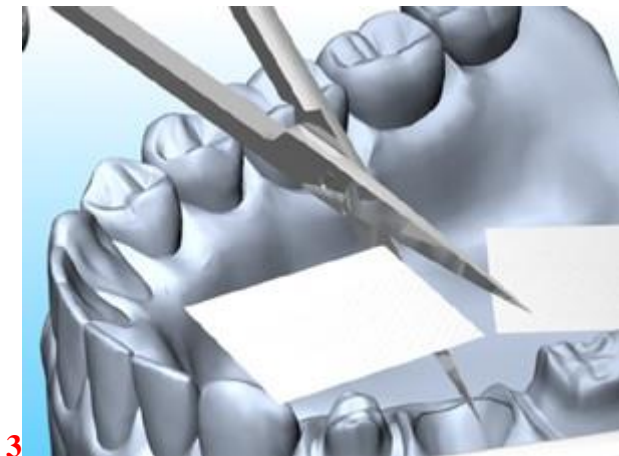
**Please note: When making temporary bridges directly in the mouth, use dual curing and wet the fibers with light cure resin.**

Wax a model of the temporary bridge or provisional bridge (**FIG 1**).



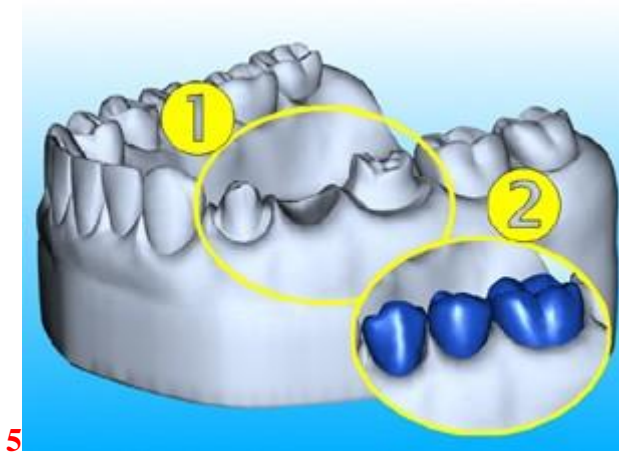
Make a silicone putty mold or impression from the wax model (**FIG 2**). Remove the wax patterns and lubricate the model.

Cut the Fiber and/or Mesh into suitable pieces (**FIG 3**). Single layers of mesh and fiber are sufficient. A second layer is recommended when the bridge contains more than one pontic.

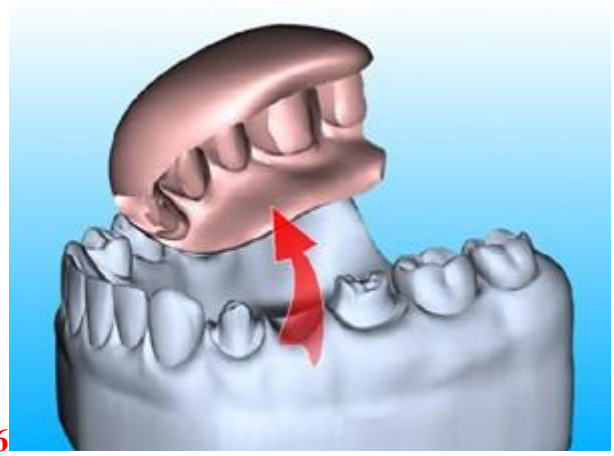


Wet the Fiber and Mesh with a thin mixture of monomer liquid and acrylic powder for at least 30 seconds (**FIG 4**). Wet immediately after mixing (all solvent free resins and powder-liquid acrylics may be used to wet Perma Fiber and Mesh). **Please note: Always use a powder-liquid mixture to wet the fibers. The powder-liquid mixture of cold curing acrylic should be thin to have sufficient time for wetting.**

Fill the mold or impression with resin and position the Fiber over the abutments and across the pontic. Position the Mesh pieces in the mold or impression on top of the abutment (**FIG 5**).

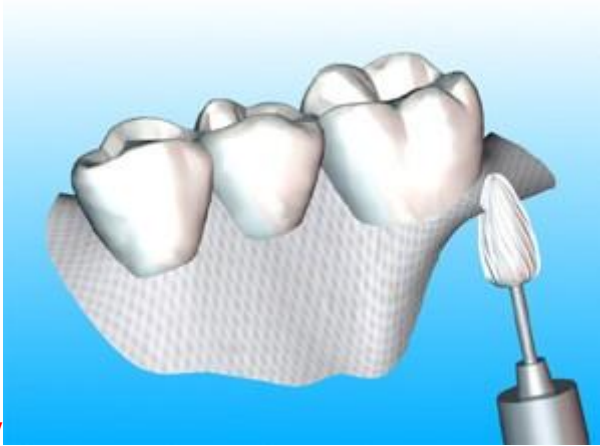


5



6

Put extra self cure resin on the model in the pontic areas. Seat the impression/mold on the model and hold in place with a rubber band. Cure in a pressure pot (**FIG 6**).



7

Finish the bridge by grinding or polishing in a normal manner (**FIG 7**).

[Perma Fiber/Mesh Main Page](#)

[Perma Mesh Instructions](#)

[Perma Fiber Instructions](#)

*PREAT Perma Fiber & Mesh is a product of*



T0056.REV.00