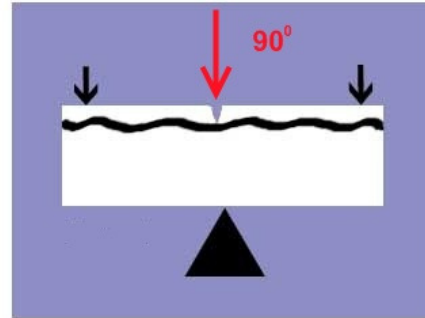




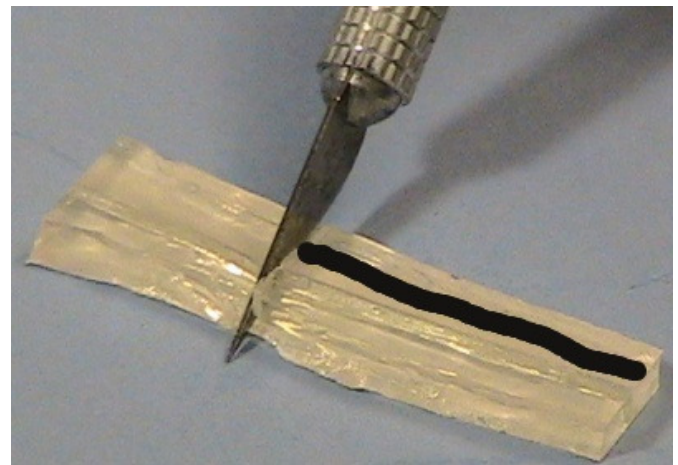
www.preat.com
800-232-7732

eFiber Denture Repair



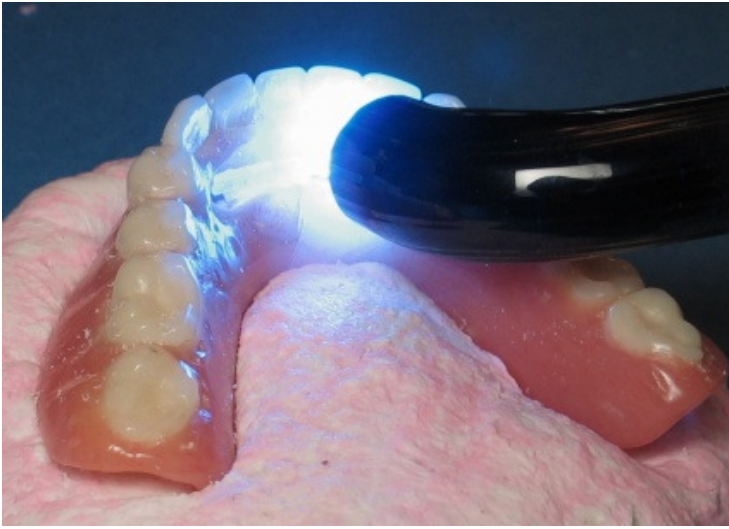
To repair the common midline fracture on a lower denture, the denture is luted back together and a putty matrix is fabricated.

In order to properly strengthen the prosthesis, the reinforcement is placed perpendicular to the fracture forces. Therefore, a groove is cut in the denture--right beneath the anterior teeth--to receive the fiber reinforcement.



Paint eFiber Adhesive in the trough and light cure for 30 seconds.

Next, use wax rope--or floss--to measure the length of the fiber needed. Cut the appropriate length of eFiber, and place the fiber in the trough. Hold the fiber in place with a handheld instrument, and light cure the fiber.



Use the technique of choice to fill the remainder of the trough with acrylic resin. Cure, and grind and polish to a high shine. It's that easy!!!

